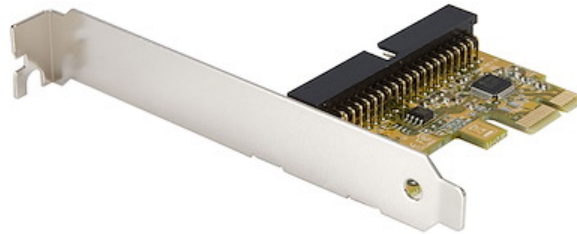


## 1 Port PCI Express IDE Controller Adapter Card

**Product ID:** PEX2IDE



This PCI Express IDE Controller Adapter Card provides a cost-effective way to use legacy drives with modern computers, by converting a PCI Express port into an IDE port.

Providing data burst transfer rates of up to 133MBps and support for PIO 0/1/2/3/4 and UDMA 33/66/100/133 operating modes, the IDE controller card offers an efficient way to add an IDE channel with support for two IDE drives on the same channel.

A complete dual profile solution, the PCI Express IDE controller card provides both standard and low profile brackets for adapting to slimline or small form factor system applications.

## Certifications, Reports and Compatibility

### Applications

- Add an additional IDE port to a computer system
- Replace a failed IDE port
- Add an IDE port for connecting legacy ATA devices such as old hard drives and tape drives

### Features

- 2-channel IDE port supports two drives
- 48-bit LBA support
- Supports ATA/ATAPI commands

- Supports UDMA 6 mode which supports transfer rates up to 133 MBps
- Includes a low profile installation bracket

---

**Hardware**

Warranty	Lifetime
Ports	1
Interface	IDE
Bus Type	PCI Express
Card Type	Standard Profile (LP bracket incl.)
Chipset ID	JMicron - JMB368

---

**Performance**

LBA support	48-bit
-------------	--------

---

**Connector(s)**

Connector Type(s)	PCI Express x1
Internal Ports	IDE (40 Pin, EIDE/PATA)

---

**Software**

OS Compatibility	Windows 2000, XP, Vista, 7, 8, 8.1, 10, 11 Windows Server 2008 R2, 2012, 2016, 2019
------------------	--

---

**Special Notes / Requirements**

System and Cable Requirements	Available PCI Express expansion slot
-------------------------------	--------------------------------------

---

**Physical Characteristics**

Color	Yellow
Material	Steel
Product Length	2.0 in [52.0 mm]
Product Width	0.9 in [22.0 mm]
Product Height	4.7 in [12.0 cm]



Weight of Product	4.2 oz [120.0 g]
-------------------	------------------

---

**Packaging Information**

Package Length	9.1 in [23.0 cm]
Package Width	6.5 in [16.5 cm]
Package Height	1.7 in [42.0 mm]
Shipping (Package) Weight	7.1 oz [200.0 g]

---

**What's in the Box**

Included in Package	PCI Express IDE Controller Card
	IDE Cable
	Low Profile Bracket
	Instruction Manual

---

***\*Product appearance and specifications are subject to change without notice.***

